



SAFETY CAUTION

For ages 12 and older. Needles could pose a choking hazard. The pins could poke you if not used properly.

PARTS

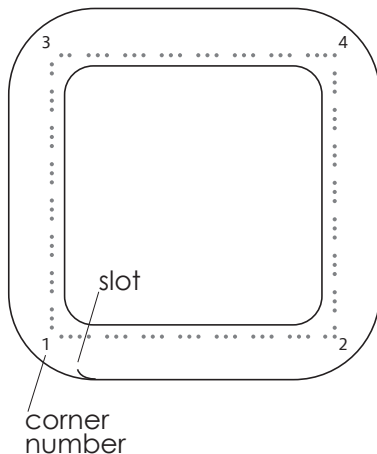
- 1 – Zoom Loom
- 1 – 6" weaving needle
- 1 – 3" yarn needle
- 1 – instruction book

INTRODUCTION

To get ready to weave on the Zoom Loom, you'll wind the yarn back and forth across the loom three times—vertically, horizontally, then vertically again. You'll weave horizontally to complete your square.

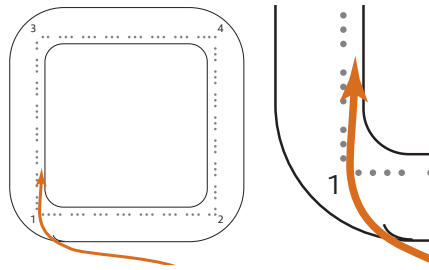
Please begin by reviewing the diagram of the pin loom. The winding instructions refer to the numbers on the corners. It's important to use the correct pins when winding.

Each square uses about 8 yards of yarn.

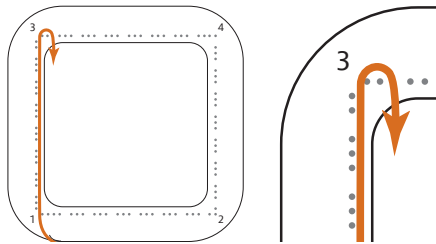


GETTING READY TO WEAWE

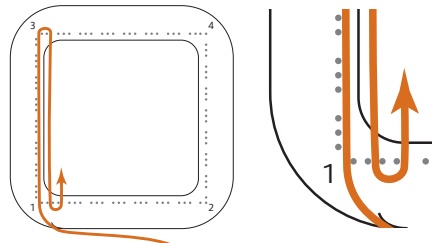
1. Orient the loom so that corner 1 is at the lower left.
2. Place the yarn in the slot, leaving a 5-6" tail.



3. Wind the first thread, beginning at corner 1, between the horizontal and vertical pins, ending at corner 3.
4. Wrap the yarn around the group of two pins at corner 3.

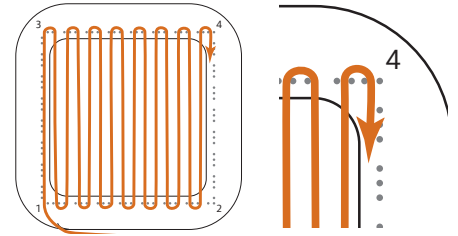


5. Bring the yarn back down to the bottom of the loom and around the last two pins of the group of four pins.
6. Continue winding back and forth across the loom, using the last two pins of each group, until you reach corner 4. The yarn should be even, but not pulled tight.



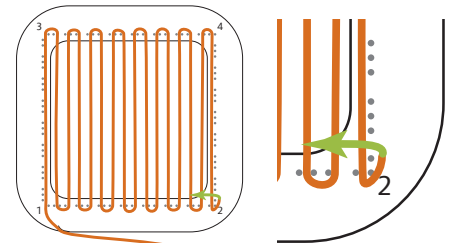
- Find our Zoom Loom video at <https://youtu.be/gKrifKYanNA>
- Find Zoom Loom projects and resources at schachtspindle.com

7. At corner 4, the yarn goes around the middle two pins in the group of four, then down along the column of pins to corner 2.



As you wind the yarn on the loom, notice that the yarn runs straight from side to side. If it does not, make sure you are using the correct pins.

8. At corner 2, take the yarn straight down along the pins on the side, and then to the right around the two pins at the bottom right of the loom. The yarn is now heading horizontally to the left across the loom. You've completed the first layer.



For the second layer, the yarn is shown in a different color for clarity.

These instructions assume that the Zoom Loom remains in one position as you wind the yarn on the loom. As you become familiar with the process, you might be more comfortable winding the second layer if you turn the loom a quarter turn to the right, so that you are winding the yarn back and forth vertically as in the first layer.

If you choose to turn the loom, you will need to allow for that as you read the instructions and drawings. Be sure to return the loom to its original position with corner 1 at the bottom left before you begin winding the third layer.

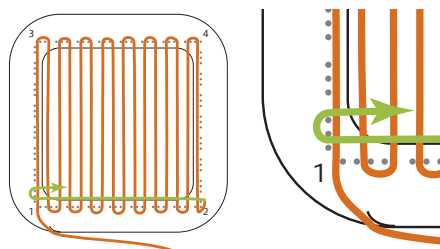


Find out more at schachtspindle.com
 Schacht Spindle Company
 6101 Ben Place Boulder, CO 80301
 p. 303.442.3212

Made in the USA

© 2021 Schacht Spindle Company, Inc.

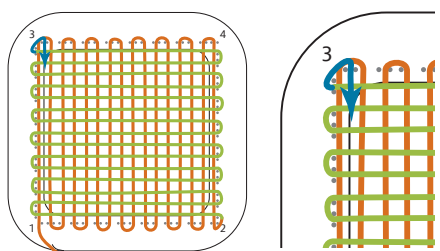
9. At corner 1, the yarn goes around the top two pins in the first group of three pins. Wind across to the right side.



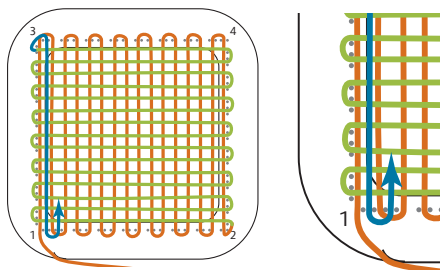
10. Continue winding back and forth across the loom until you reach corner 3, always going around the top two pins in each group.

11. Loop the yarn around the top pin on the left side and the left pin on the top side, going diagonally across corner 3. The second layer is complete.

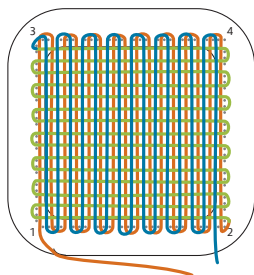
For the third layer, the yarn is shown in a third color for clarity.



12. Take the yarn back down toward corner 1. At the first group of four pins, go around the two middle pins. Note that the yarn (shown in blue) now lies between the yarns in the first layer (shown in orange).

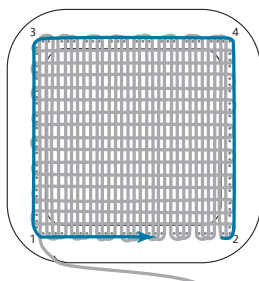


13. Bring the yarn up to the top of the loom and around the first two pins of the next group. Continue across the loom until you reach corner 2, always going around the first two pins in each group of three. The third layer is complete.



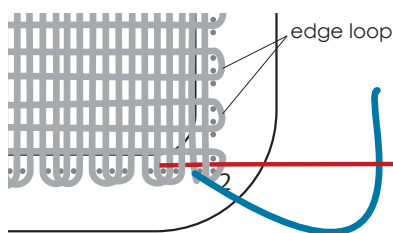
WEAVING

1. Measure the yarn you'll need to weave by wrapping it five times around the outside of the pins. Cut the yarn.



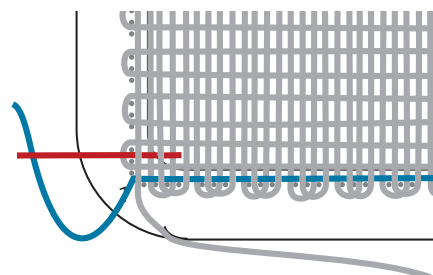
2. Unwrap the long tail you just created and thread your 6" weaving needle.

3. Start weaving at corner 2, on the right side of the loom. When you begin each row, you will always place the needle over an edge loop, then go under, over, under all the way across the loom. Pull the needle through.



Always go over a loop when beginning a row. As with winding the yarn on the loom, use a light tension while weaving.

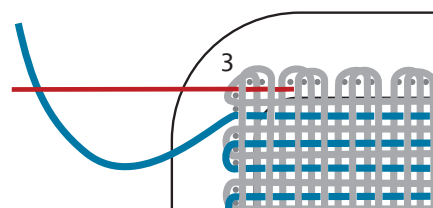
4. The next row starts at the left side of the loom. Go over the loop, then alternately under and over to the right.



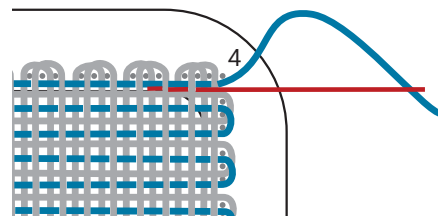
5. Continue weaving until you reach corner 3 (top left).

You can use the tip of the needle to straighten out the yarn on the loom if it moves out of place.

6. At corner 3, the needle goes over the corner loop, then under and over right next to the pins. If your yarn is wound on the loom too tightly, this row can be difficult to weave.



7. Weave in the tail by taking the needle back the way it came, by weaving over 2 yarns then under and over along the yarn you just wove.



8. Repeat this process for the yarn tail in the slot.

9. Gently lift the square off the loom. Your square is complete.

Scan this code with your smart phone to find videos, projects, and more!

